



Rabbit anti Rho Kinase/ROCKII (pT249) Polyclonal Antibody

Alternative Name(s): Rho-associated, coiled-coil containing protein kinase 2; ROCK2; ROCK-II

Order Information

- **Description:** Rho Kinase/ROCKII (pT249)
- **Catalogue:** 602-870
- **Lot:** See label
- **Size:** 100ug/200ul
- **Host:** Rabbit
- **Clone:** nan
- **Application:** IHC(P), WB
- **Reactivity:** Hu, Ms, Rt, Ck, Bv, Canis

ANTIGEN PREPARATION

A synthetic peptide corresponding to the epitope -CDTAV- with a single phosphorylation site Thr249 of human Rho Kinase/RockII protein. This sequence is identical among human, mouse, rat, chicken, dog and bovine.

BACKGROUND

Rho A-dependent kinase (ROCKII), or ROK-alpha, is identified a serine/threonine kinase, a downstream effector of the small GTPase Rho, mediating effects of Rho on the actin cytoskeleton, formation of actin stress fibers and focal adhesions, ROCKII alters cardiac myofilament response to Ca²⁺ by mechanisms involving phosphorylation of thin filament proteins. ROCK-II induces a depression in maximum ATPase rate and tension, which is associated with phosphorylation of troponin T (TnT), troponin I (TnI), and myosin-binding protein C (C-protein). The phosphorylation of Rho-kinase at Thr 249, Thr 396 plays important role in G-protein signaling..

PURIFICATION

The Rabbit IgG is purified by site-modified Epitope Affinity Purification.

FORMULATION

This affinity purified antibody is supplied in sterile Tris-buffered saline (pH7.2) containing antibody stabilizer

SPECIFICITY

This antibody recognizes ~165 kDa of human ROCKII at a phosphorylation site of Thr249. It does not react to non-phosphorylated protein. This antibody also reacts with mouse and rat. The other species are not tested.

STORAGE

The antibodies are stable for 24 months from date of receipt when stored at -20oC to -70oC. The antibodies can be stored at 2oC-8oC for three month without detectable loss of activity. Avoid repeated freezing-thawing cycles.

APPLICATIONS/SUGGESTED WORKING DILUTIONS*

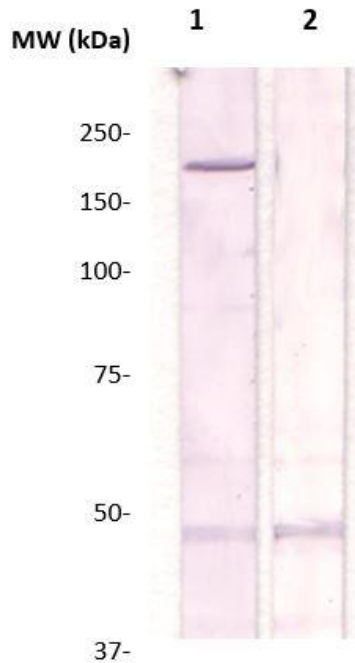
- Western Blot: 0.1-1 µg/ml
- ELISA: 0.01-0.1 µg/ml
- Immunoprecipitation: 2-5 µg/ml
- IHC: 2-10 µg/ml
- Flow cytometry: Not tested
- Molecular Weight: 165.0
- Positive Control: Kidney Tissue
- Cellular Location: Cell Membrane

*Optimal dilutions should be determined by researchers for the specific applications.

FOR RESEARCH USE ONLY.

AbboMax, Inc 2528 Qume Drive, Suite 8, San Jose, California 95131, USA
1 408-573-1898 (Tel). 1 408-573-1858 (Fax). www.abbomax.com info@abbomax.com

DATA ATTACHMENTS



Western Blot: The cell lysate derived from Conditioned 3T3 cell was immunoprecipitated by Rabbit anti Rho Kinase (pT249), (Cat#602-870), then immunoprobed by the same antibody at 1:500 (lane 1). Lane 2 is a negative control. Observed a major immunoreactive band at molecular weight ~165kDa.

REFERENCES

FOR RESEARCH USE ONLY.